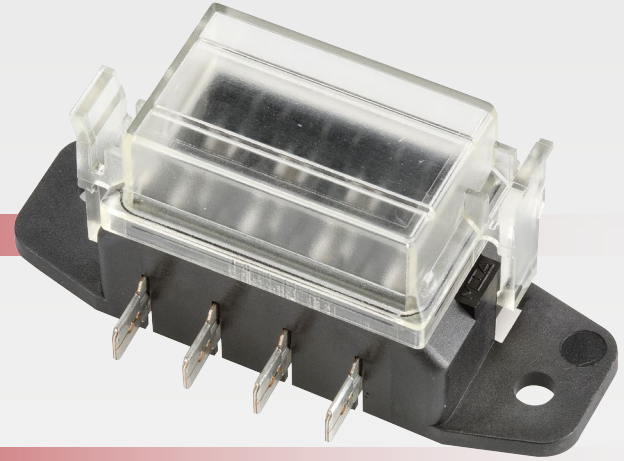


**NARVA®** Standard Blade Fuse Boxes  
THE VISION TO GO FURTHER  
Sold Individually

www.narva.com.au



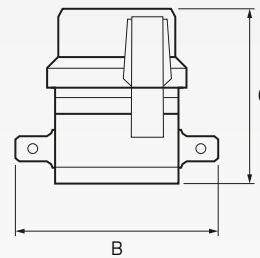
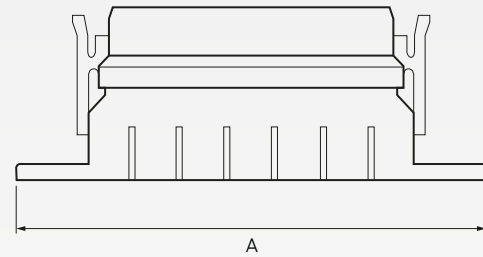
**DESCRIPTION**

Fuse boxes to suit standard ATO blade fuses (lateral connection with female 6.3mm blade terminals).  
Equipped with transparent cover and gasket. 30A per circuit at 12V.

**TECHNICAL SPECIFICATIONS**

<b>Terminals to Suit</b>	• Standard ATO fuses (6.3mm blade terminals)
<b>Voltage</b>	• 12 Volt
<b>Max. Circuit Amps</b>	• 30 Amps per circuit
<b>Colour</b>	• Black base, Transparent cover

**DIMENSIONS**



Please refer to table below for full measurements

Part Number.	Dimensions (A x B x C)
54420BL	• 80mm (A) x 45mm (B) x 37mm (C)
54422BL	• 100mm (A) x 45mm (B) x 37mm (C)
54424BL	• 120mm (A) x 45mm (B) x 37mm (C)

**PART NUMBERS**

Part Number.	No. of Fuses	Max Current per Circuit	Descriptions
54420BL	4 Fuses	30 Amps @ 12 Volt	4 way standard blade fuse box. Comes with transparent cover and gasket.
54422BL	6 Fuses	30 Amps @ 12 Volt	6 way standard blade fuse box. Comes with transparent cover and gasket.
54424BL	8 Fuses	30 Amps @ 12 Volt	8 way standard blade fuse box. Comes with transparent cover and gasket.