

NARVA®
THE VISION TO GO FURTHER

Eurotech LED
Amber Light Box
#85014A-1

www.narva.com.au



DESCRIPTION

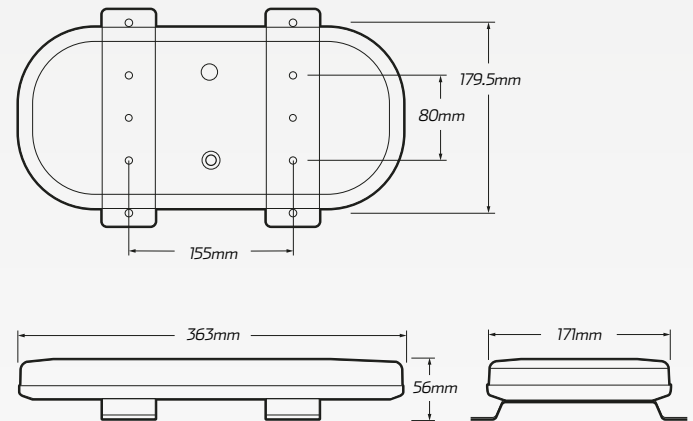
12/24 Volt Eurotech LED light box with amber lens. Features SAE class 1 approval, increased brightness due to all new optics, extreme environmental resistance and ultra low profile, able to be mounted with or without the mounting bracket.

8 selectable flash patterns. IP67 rated protection.
ECE R65 Class 2 approved with life time no fault warranty.

FEATURES

- SAE Class 1 & ECE R65 Class 2 approved
- Vibration rating & Day / Night mode
- Extreme environmental resistance, sealed to IP67 rated weatherproof protection
- Low profile mounting via brackets or direct to vehicle
- Lifetime no fault manufacturer warranty

FLASH PATTERNS



FLASH PATTERNS

1	• Single (constantly on)	5	• Quint rotating
2	• Double (all flashing) SAE	6	• Rotating
3	• Ultra (alternate flashing)	7	• Ultra (all/alt. flash)
4	• Ultra (cross flashing)	8	• Ultra-double (all. flash)

TECHNICAL SPECIFICATIONS

Voltage	• 12/24 Volt
Peak Current Draw	• 3.8 Amp @ 12 Volt
IP Rating	• IP67 rated
Operating Temperature	• -30°C to 60°C
Night Mode Percentage	• 30%

Dimensions	• 363mm (L) x 171mm (W) x 56mm (H)
Lens Colour	• Amber lens
Cable Length	• 2 metres
Approvals	• SAE Class 1, ECE R65 Class 2 & Level 3 radio safe
Supersedes	• 85014A