

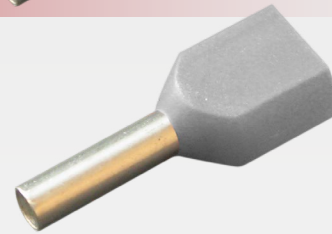
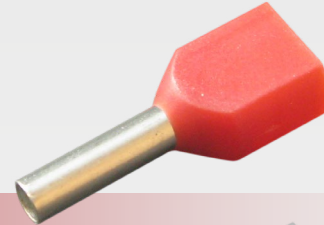
**QVEE**

AUTOMOTIVE | MINING | MARINE

www.qvee.com.au

**Twin Boot Lace Pins**

Insulated Nylon Copper



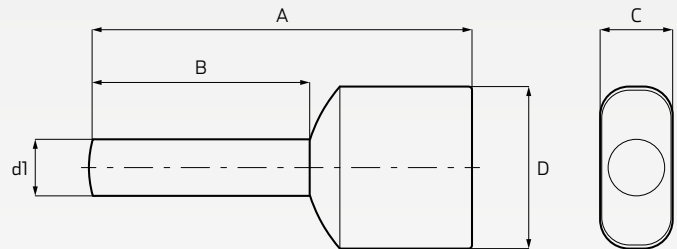
**DESCRIPTION**

QVEE's twin boot lace/ferulle pins are made from the highest quality copper and insulated nylon to provide the best result in stranded copper crimping. RoHS & DIN approved.

Allows two cable to be crimped inside the boot lace.

**TECHNICAL SPECIFICATIONS**

Operating Temperature	• -40°C to 105°C
Insulation Material	• Nylon
Body Material	• Copper tube
Finish Material	• Tin plated
Approvals	• RoHS approved, DIN 46228/4



**TECHNICAL SPECIFICATIONS**

Part Number.	Colour	Dimensions (mm)					Wire Range	Qty	Description
		A	B	C	D	d1			
BLT010	• Red	• 15	• 8	• 3.4	• 5.4	• 2	• 1mm <sup>2</sup>	• 100	• Red twin ferulle/boot lace pins suits 1mm <sup>2</sup> cable entry. Comes in packs of 100.
BLT015	• Black	• 16	• 8	• 3.6	• 6.6	• 2.3	• 1.5mm <sup>2</sup>		• Black twin ferulle/boot lace pins suits 1.5mm <sup>2</sup> cable entry. Comes in packs of 100.
BLT025	• Grey	• 18.5	• 10	• 4.2	• 7.8	• 2.8	• 2.5mm <sup>2</sup>		• Grey twin ferulle/boot lace pins suits 2.5mm <sup>2</sup> cable entry. Comes in packs of 100.
BLT060	• Yellow	• 26	• 14	• 6.9	• 10	• 4.8	• 6mm <sup>2</sup>		• Yellow twin ferulle/boot lace pins suits 6mm <sup>2</sup> cable entry. Comes in packs of 100.
BLT100BN	• Brown	• 26.5	• 14	• 7.6	• 12.8	• 6.4	• 10mm <sup>2</sup>		• Brown twin ferulle/boot lace pins suits 10mm <sup>2</sup> cable entry. Comes in packs of 100.