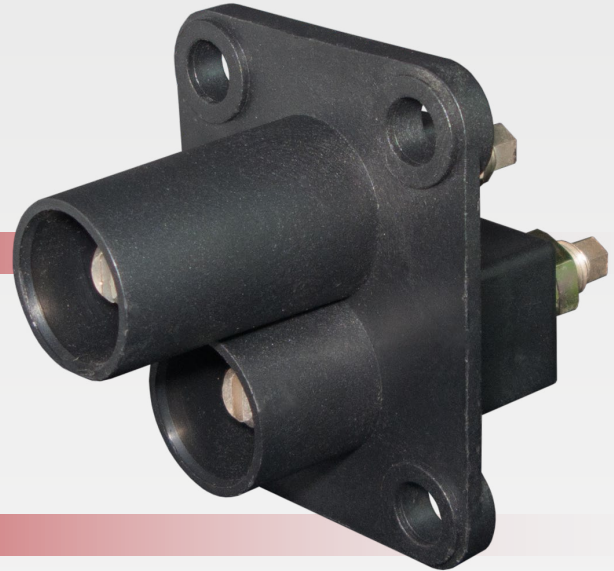


QVEE CAT Style
Jump Start Receptacle
AUTOMOTIVE | MINING | MARINE #CATJS

www.qvee.com.au

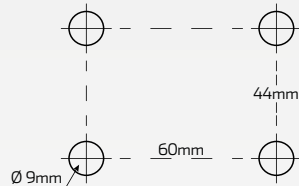
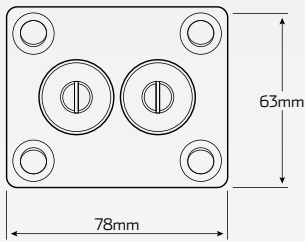


DESCRIPTION

CAT style jump start receptacle. Made from heavy duty ABS plastic and silver plated brass contacts. High current capacity and stepped terminal design to eliminate cross polarity.

Offers a quick and easy connection. Ideal for use on applications where battery terminal access is limited.

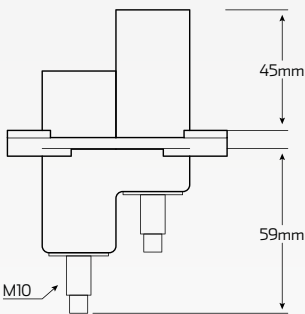
DIMENSIONS



Mounting Diagram

Features:

- High current capacity
- Ideal for use on applications where access to battery terminals is restricted or prohibited
- Stepped design eliminates cross polarity connections
- Silver-plated brass contacts provide low resistance for superior conductivity
- Heavy duty construction



Total Dimensions

- Length: 78mm
- Width: 63mm
- Height: 110mm

Comprises:

- 1 x CAT style receptacle
- 2 x Hex nuts



*Specifically designed to suit QVEE CAT style accessories

TECHNICAL SPECIFICATIONS

Cable Size	• 70mm ²
Contacts	• Silver plated brass
Housing Material	• High impact ABS plastic
Dimensions	• 78mm L x 63mm W x 110mm H

Stud Size	• M10
Operating Temperature	• -20°C to 105°C
Approvals	• High current connectors UL, RoHS