

QVEE Cable Tie Screw Mount Base
AUTOMOTIVE | MINING | MARINE #CTHD

www.qvee.com.au



DESCRIPTION

Natural colour heavy duty screw mount cable tie base.
Comes in packs of 100.

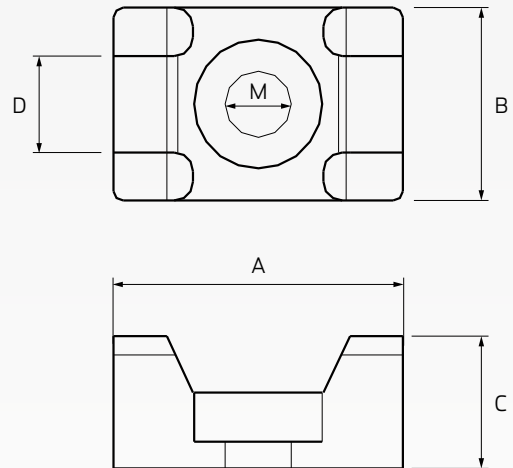
FEATURES

- Natural colour
- Screw on (saddle type) design, provides maximum stability to wire bundles
- UL flammability UL-94V-2 rated
- Made from UL approved nylon 66 material
- Comes in packs of 100

TECHNICAL SPECIFICATIONS

Type	• Screw mount (saddle type)
UL Approved	• Yes
Material	• UL approved nylon 66
Material Colour	• Natural
Flammability	• Approved
Flammability Rating	• UL94V-2 flame retardant
Dimensions	• 23mm D x 16mm W x 9.8mm H
Mounting Hole	• 6.3mm

Dimensions



Length (A)	Width (B)	Height (C)	Inner Width (D)	Mounting Hole (M)
23mm	16mm	9.8mm	9.0mm	6.3mm