



**DTM Series 3 Circuit  
Deutsch Connector Kit**  
#DT3M

www.te.com



**DESCRIPTION**

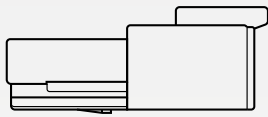
3 circuit DT Series Deutsch connector kit.

Deutsch DTM series of transportation connectors feature a miniature contact with an enhanced design. Thermoplastic housing and silicon rubber seals.

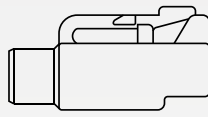
The DTM is the connector to be used in harsh environmental applications where reliable signal circuits are critical to operation performance. Rated at 7.5A per circuit.

- Accept contact size 20 (7.5 amps)
- In-line, flange or PCB mounts available
- Thermoplastic housing
- Intergrated latch for mating
- Wedgelocks confirm contact alignment and retention

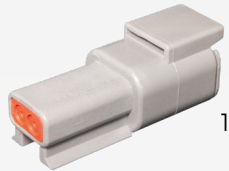
**DIMENSIONS**



20.73mm W x 16.21mm H x 41.15mm L  
DTM04-3P



16.26mm W x 14.00mm H x 27.56mm L  
DTM06-3S



1



2



3



4



5



6

**COMPONENTS**

No.	Part No.	Description
• 1	• DTM04-3P	• 3 circuit mini DT series receptacle housing to take male pins
• 2	• WM3P	• 3 circuit pin wedge
• 3	• P20/1	• Male pin. Takes 2mm auto cable
• 4	• DTM06-3S	• 3 circuit mini DT series plug housing to take female sockets
• 5	• WM3S	• 3 circuit socket wedge
• 6	• S20/1	• Female socket. Takes 2mm auto cable

**TECHNICAL SPECIFICATIONS**

<b>Operating Temperature</b>	• -55° C to 125° C
<b>Voltage</b>	• Up to 250V DC
<b>Amperage</b>	• 7.5 Amps per Circuit
<b>Nominal Voltage</b>	• 12, 24, 42, 48, 80, 90, 125, 240 Volts
<b>Moisture Resistance</b>	• 3 Feet Immersion with Proper Wiring
<b>Flammability</b>	• UL Recognized, Standard UL-94
<b>Dielectric Strength</b>	• < 2 mA @ 1500V AC

<b>Connector System</b>	• Wire to Wire
<b>Primary Locking Feature</b>	• Integrated in Housing
<b>Centreline (Pitch)</b>	• 4.19mm
<b>IP Rating</b>	• IP68
<b>Insulation Resistance</b>	• 1000 Megaohms Min @ 25° C
<b>Vibration Resistance</b>	• No Mechanical / Physical Damage @ 20Gs rms at 10 to 2000Hz