



**HD10 Series
In-Line Receptacles**

Sold Individually

www.te.com



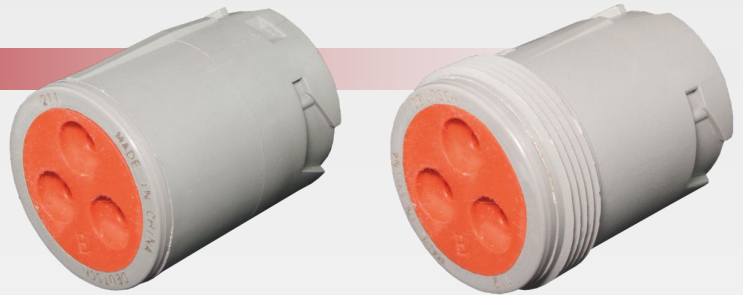
DEUTSCH
is now



DESCRIPTION

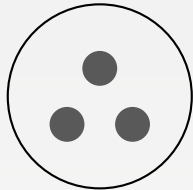
These industry proven connectors are sealed to IP68 standards. Equipped with thermoplastic housing and silicon rubber seals, perfect for harsh environments.

Takes size 16 pins. Rated at 13 Amps per circuit.

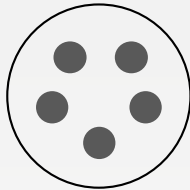


TECHNICAL SPECIFICATIONS

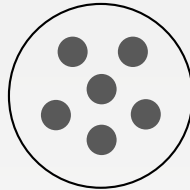
CONFIGURATIONS



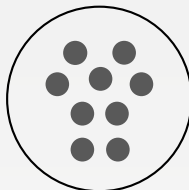
3-16/3-96
3 size 16



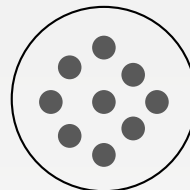
5-16
5 size 16



6-96
6 size 16



9-16
9 size 16



9-96
9 size 16

Threading:

- X-16: Non threaded rear
- X-96: Threaded rear

IP Rating	• IP68 rated	Voltage Rating	• 250 Volt DC
Operating Temperature	• -55 to 125°C	Flammability Rating	• UL 94V-1

PART NUMBERS

Part Number.	Dimensions (mm)	Terminals	Threaded	Descriptions
HD14-3-16P	• 21.62 W x 41.63 H x 21.62 L	• 3 x size 16	• No	• 3 circuit HD10 in-line receptacle. Takes pins
HD14-3-96P	• 21.77 W x 41.63 H x 21.77 L	• 3 x size 16	• Yes	• 3 circuit HD10 in-line receptacle with thread. Takes pins
HD14-5-16P	• 25.43 W x 41.63 H x 25.43 L	• 5 x size 16	• No	• 5 circuit HD10 in-line receptacle. Takes pins
HD14-6-96P	• 28.98 W x 41.63 H x 28.98 L	• 6 x size 16	• Yes	• 6 circuit HD10 in-line receptacle with thread. Takes pins
HD14-9-16P	• 32.54 W x 41.64 H x 32.54 L	• 9 x size 16	• No	• 9 circuit HD10 in-line receptacle. Takes pins
HD14-9-96P	• 32.49 W x 42.24 H x 32.49 L	• 9 x size 16	• Yes	• 9 circuit HD10 in-line receptacle with thread. Takes pins