



Vehicle Tray LED Conversion Patch Leads

Comes in packs of 2

www.ledautolamps.com



DESCRIPTION

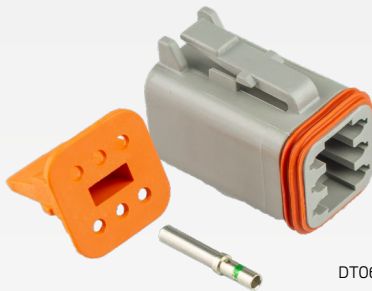
LED Autolamps vehicle tray LED conversion patch lead set to suit LED Autolamps rear combination lamps with conversion cable.

Each vehicle patch lead is equipped with a 600mm waterproof cable, a suitable plugin connector (based on car model) and a DT06-6S female connector.

Contains 2x cables.

- FEATURES:**
- Plug in waterproof connectors
 - 600mm cable length
 - No wiring or splicing of cables

TECHNICAL SPECIFICATIONS



DT06-6S

Cable Length	• 600mm
Input Plug	• DT06-6S female connector

Suitable LED Autolamps models:

1	• SO282ARWM2LR450
2	• 280ARWM2LR12/450
3	• 280ARWM2LR24/450
4	• SO275GARWM2LR450
5	• SOMAXI2LR/450B
6	• SO283ARWM2LR12

Part Number	Connector	Models	Description
PATCHRANGER/BT50		<ul style="list-style-type: none"> • Ford Ranger • Mazda BT-50 	OEM connector to vehicle with Deutsch plug for lamp. Suits Ford Ranger & Mazda BT-50. Contains 2 x cables.
PATCHL-CRUISER		<ul style="list-style-type: none"> • Toyota Landcruiser 	OEM connector to vehicle with Deutsch plug for lamp. Suits Toyota Landcruiser. Contains 2 x cables.
PATCHD-MAX		<ul style="list-style-type: none"> • Isuzu D-MAX 	OEM connector to vehicle with Deutsch plug for lamp. Suits Isuzu D-MAX. Contains 2 x cables.
PATCHCOLORADO		<ul style="list-style-type: none"> • Holden Colorado 	OEM connector to vehicle with Deutsch plug for lamp. Suits Holden Colorado. Contains 2 x cables.
PATCHHILUX		<ul style="list-style-type: none"> • Toyota Hilux 	OEM connector to vehicle with Deutsch plug for lamp. Suits Toyota Hilux. Contains 2 x cables.
PATCHTRITON-MQ		<ul style="list-style-type: none"> • Mitsubishi Triton - MQ 	OEM connector to vehicle with Deutsch plug for lamp. Suits Mitsubishi Triton - MQ. Contains 2 x cables.
PATCHNAVARAT-NP300		<ul style="list-style-type: none"> • Nissan Navara NP300 	OEM connector to vehicle with Deutsch plug for lamp. Suits Nissan Navara NP300. Contains 2 x cables.