

QVEE

AUTOMOTIVE | MINING | MARINE

4 Position Rotary
Battery Isolator Switch

#QVBI3004P

www.qvee.com.au



DESCRIPTION

12 - 24V, 4 position rotary style battery isolator switch.

Features brass terminals and silver plated contacts. 300A continuous @ 12V, 1000A intermittent @ 12V for 5 seconds. Pre-cut sides allow wires to be installed in the desired position. Suited for marine vehicles.

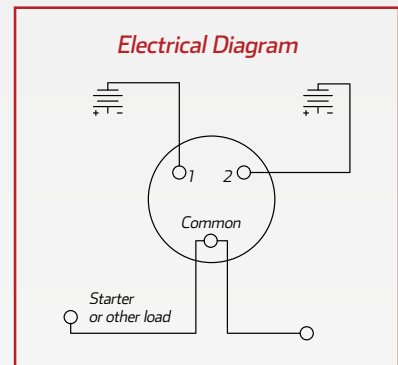
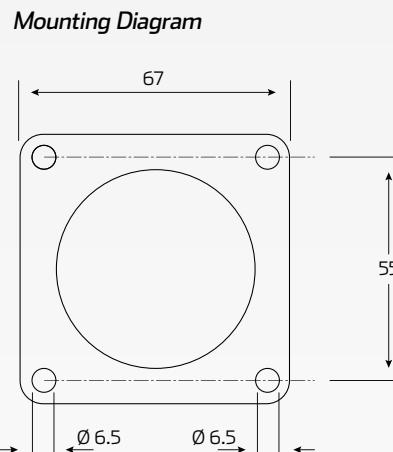
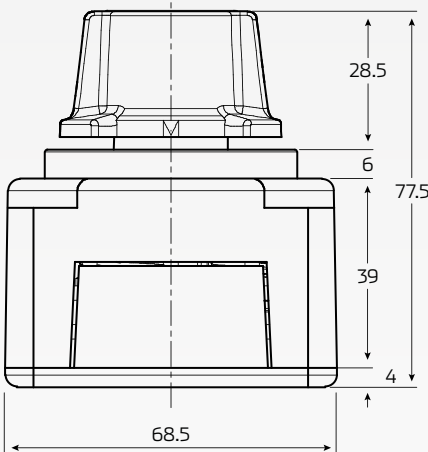
TECHNICAL SPECIFICATIONS

Features:

- 300A continuous current rating
- Silver-plated copper M10 contacts
- Panel mount with 52mm key/handle exit hole
- IP54 waterproof protection

Applications:

- Marine
- Agricultural
- Off-road
- Emergency vehicles



Dimensions:

- Width: 68.5mm
- Length: 68.5mm
- Height: 77.5mm
- Switch Ø: 45mm

*All measurements are in mm

Voltage	• 12 - 24 Volt DC
Amperage	• 300 Amp
Intermittent Current	• 1000A at 5 seconds
Contact Position	• SPST
Mounting	• Panel mount, 55mm (centre to centre)
IP Rating	• IP54 rated

Terminal Nuts	• M10 brass
Contact Material	• Silver plated copper
Position	• Knob: 1/2/1+2/Off
Operating Temperature	• -40°C to 50°C
Switch Type	• Fixed knob (battery selector)
Dimensions	• 68.5mm L x 68.5mm W x 77.5mm H