

QVEE

AUTOMOTIVE | MINING | MARINE

www.qvee.com.au

Reverse Camera Suzi Coil

#QVCM SUZ3



DESCRIPTION

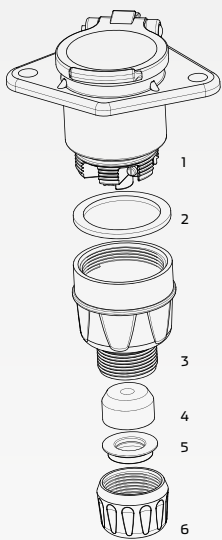
Suzi coil for reverse camera systems.

- Heavy duty 12 - 24V spiral extension cable.
- 7-pin cable configuration, deals both power and AV transmission through a single connection.
- Perfect for trucks, utes, caravans and mine spec vehicles.

COMPRISES

- 2 x 7 pin socket camera connector cable
- 1 x 7 pin 3m extension suzi coil

TECHNICAL SPECIFICATIONS



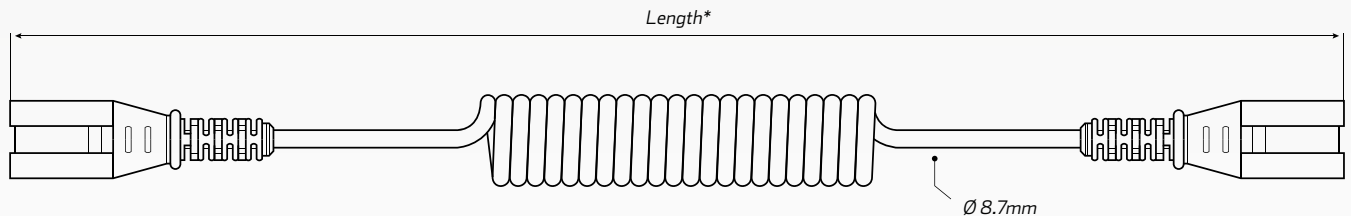
Socket Specifications

1	• Cap nut 13p/7p cable, PA66 black
2	• Ring PA66 black
3	• Stopper, SBR60+/-5 shore A, black
4	• Screw cap, M36x1.5, PP, black
5	• Seal ring EPDM 70+/-5 shore A, black
6	• Socket, 7 pin 24V, ISO1185

General Specifications

Voltage	• Multivolt 12 - 24V
AV Input	• 3 AV input
Cable Length	• 3 meters, 4.5 meters extended
Pin Orientation	• 7 pin plug
UV stabilized	• Yes
Operating Temperature	• -40°C - 85°C

Suzi Coil Specifications



*Total length of cable includes male and female connectors

Wire Structure	• 7 Pin, DIN ISO 6722
Approvals	• ISO 4141-1, -2, -3, -4

Core Insulation	• PVC, Shore D 53+/-5
Sheathing	• PUR, Shore A 87+/-5, black