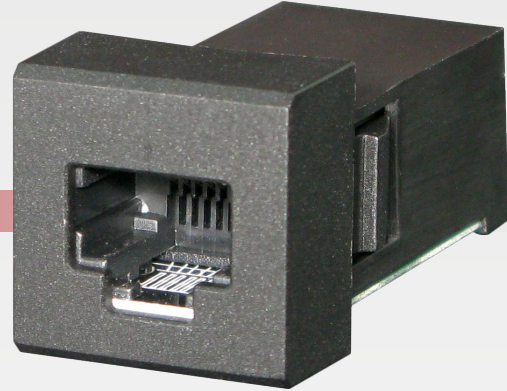


QVEE
AUTOMOTIVE | MINING | MARINE

Square Toyota
Style UHF Insert
#QVSWPLUHFBL

www.qvee.com.au



DESCRIPTION

The QVSWPLUHF UHF inserts are designed as a direct replacement for the latest 200 Series Landcruiser & Prado.

RJ45 rear connector (not included). Easy to install.

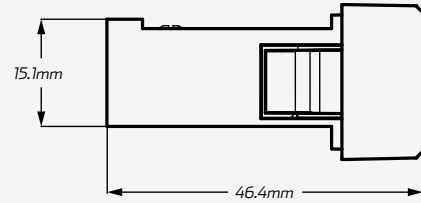
Great look for any fit out.

TECHNICAL SPECIFICATIONS

UHF Socket	• RJ45 Connectors (not included)
Voltage Input	• 12V Input
Amperage Rating	• 3 A
LED Current Draw	• Less than 0.25 W
LED Colour	• No illumination
Applications	<ul style="list-style-type: none"> • 4WD's, RV's, ATV's, Cars • Trucks, Agricultural Machinery • Earthmoving Equipment.

DIMENSIONS

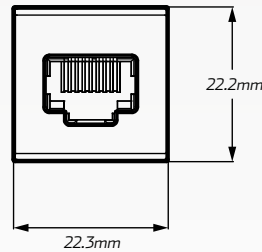
SIDE



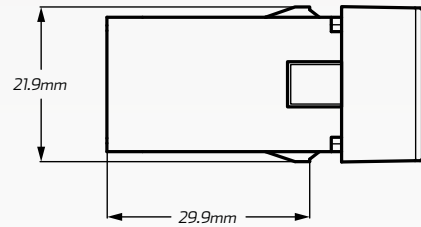
MODEL

1	• 2018 - Current 200 Series Landcruiser
2	• 2018 - Current Prado

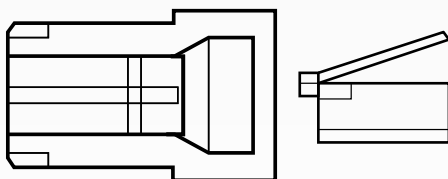
FRONT



TOP



WIRING HARNESS



RJ45 Connector
(Not included)