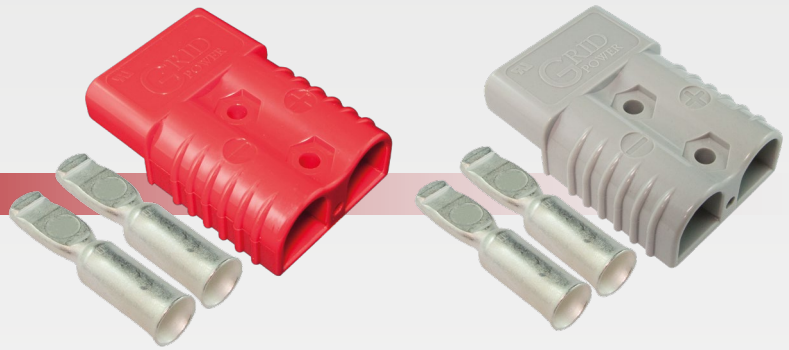


**QVEE**

AUTOMOTIVE | MINING | MARINE

www.qvee.com.au

175 Amp  
Anderson Plug  
#QVSY175



**DESCRIPTION**

175A Anderson style connector with 2 terminals.  
Takes 2 B&S (35mm<sup>2</sup>) battery cable.

Sold individually or in a blister pack.

**TECHNICAL SPECIFICATIONS**

**GENERAL SPECIFICATIONS**

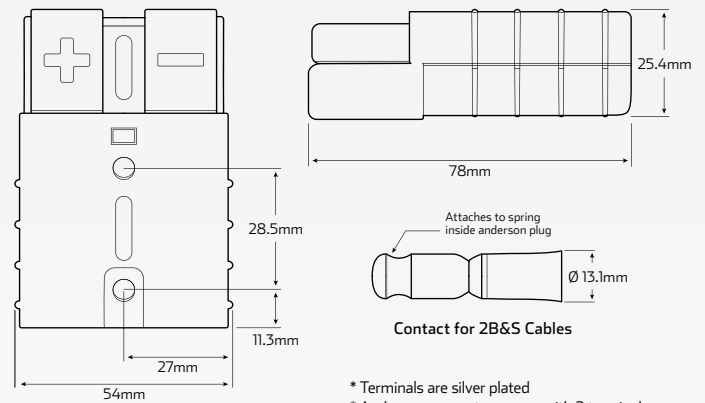
Operating Temperature	• -20°C to 105°C
Voltage Rating	• 600 Volts DC
Current Rating	• 175 Amp (wire produces 30°C rise)
Max. Withstand Voltage	• 2200 Volts over short period
Mechanical Life	• 10,000 uses
Approvals	• UL approved, RoHS

**HOUSING SPECIFICATIONS**

Average Insertion Force	• 25 lbs (11.25kg)
Max. Wire Insulation Ø	• 0.75" / 19mm

**TERMINAL SPECIFICATIONS**

Average Terminal Holding Force	• +/- 300 lbs
Average Contact Resistance	• 100 Micro-Ohms @ 2 B&S



\* Terminals are silver plated  
\* Anderson connector comes with 2 terminals

**PART NUMBERS**

Single Part No.	Blister Pack Part No.	Colour	Description
QVSY175	QVSY175BL	• Grey	• 175 Amp grey Anderson style connector with 2 terminals. Takes 2B&S (35mm <sup>2</sup> ) cable.
QVSY175R	QVSY175RBL	• Red	• 175 Amp red Anderson style connector with 2 terminals. Takes 2B&S (35mm <sup>2</sup> ) cable.

Part No.	Colour	Description
QVSY175T	• Silver-Plated	• Terminal replacements to suit 175 Amp Anderson style connectors. Sold in pairs of 2.