

THE POWER OF REDARC® Tow-Pro Switch Inserts

Sold Individually

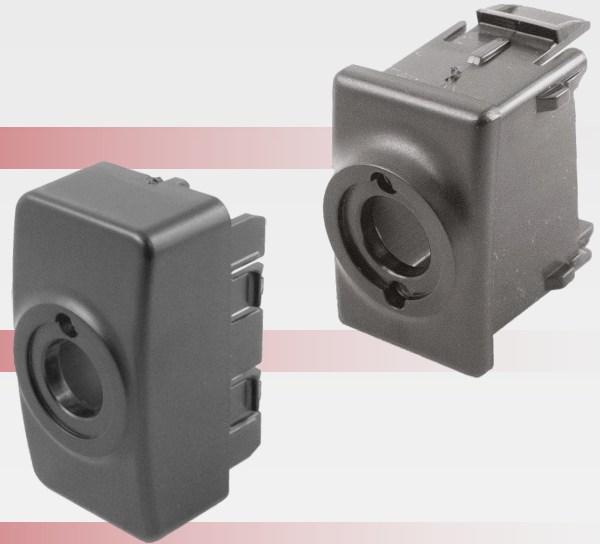
www.redarc.com.au

DESCRIPTION

REDARC Tow-Pro switch inserts provides easy and convenient Tow-Pro remote head installation into vehicles. The insert are designed to create an OE looking remote head.

FEATURES

- Simple to install. Features an OE insert look
- Various model to suit a wide range of vehicle models



PART NUMBERS

Part Number.	Vehicle Type	Model Year	Description
RTPSI-001	• Universal type* (7mm thick panels)	• Vehicles with 25mm mounting dia x 28mm W x 38mm H	• Tow-Pro universal switch insert panel. Allows the brake controller to be remote head mounted, when suitable switch blank is not available in the vehicle.*
RTPSI-002	• Toyota Hilux / Prado 150 / Prado 200	• 2015 - Current	• Tow-Pro switch insert panel to suit Toyota and Mitsubishi vehicles. Allows the brake controller to be remote head mounted with an OE look.
	• Toyota Kluger / Landcruiser 200	• 2008 - Current	
	• Toyota RAV4	• 2006 - 2018	
	• Toyota Fortuner	• 2016 - Current	
RTPSI-003	• Mitsubishi Mirage / Outlander / Triton	• 2016 - Current	• Holden Colorado RG
	• Isuzu D-Max / MU-X *	• 2012 - Current	
RTPSI-004	• Mazda BT-50 (Tow-Pro Elite V2)	• 2011 - Current	• Tow-Pro Elite V2 switch insert panel to suit Mazda vehicle. Allows Tow-Pro Elite V2 brake controller to be remote head mounted with an OE look.
RTPSI-005	• Isuzu D-Max (SX)	• 2017 - Current	• Tow-Pro switch insert panel to suit Isuzu and Mazda vehicles. Allows the brake controller to be remote head mounted with an OE look.
	• Mazda BT-50	• 2020 - Current	
RTPSI-006	• Isuzu D-Max (LS) / MU-X (LS)	• 2017 - 2020	• Tow-Pro switch insert panel to suit Isuzu vehicles. Allows the brake controller to be remote head mounted with an OE look.
RTPSI-007	• Toyota 70 Series	• -	• Tow-Pro switch insert panel to suit Toyota vehicles. Allows the brake controller to be remote head mounted with an OE look.
RTPSI-008	• Nissan Pathfinder R52 (Tow-Pro Elite V3)	• 2013 - Current	• Tow-Pro Elite V3 switch insert panel to suit Nissan and Mercedes vehicle. Allows Tow-Pro Elite V3 brake controller to be remote head mounted with an OE look.
	• Nissan Navara NP300 (Tow-Pro Elite V3)	• 2015 - Current	
	• Mercedes-Benz X-Class (Tow-Pro Elite V3)	• 2018 - Current	
RTPSI-009	• Mazda BT-50	• 2011 - 2020	• Tow-Pro switch insert panel to suit Mazda vehicles. Allows the brake controller to be remote head mounted with an OE look.
RTPSI-010	• Round Universal type* (2.2mm thick panels)	• Vehicles with 10mm mounting hole x 32mm OD x 5.4mm W	• Tow-Pro round universal switch insert panel. Allows the brake controller to be remote head mounted, when suitable switch blank is not available in the vehicle.*
RTPSI-011	• Toyota models (Tow-Pro Elite V3)	• 2019 - Current	• Tow-Pro Elite V3 square Toyota switch insert panel. Allows the brake controller to be remote head mounted with an OE look.