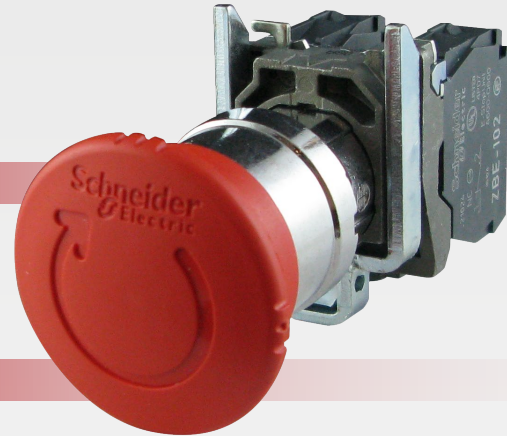




Mushroom Head E-Stop Assembly - N/C & N/C
#XB4BS8444

www.se.com



DESCRIPTION

Mushroom Head E-Stop Assembly with Normally Closed & Normally Closed contacts. Designed with metal bezel, ideal for severe environments with high impact and vibrations. 22mm standard cut out.

TECHNICAL SPECIFICATIONS

General Specifications

Function	• 1 x Normally closed & 1 x Normally closed
Contact Operation	• Slow-break
Connections - Terminals	• Screw clamp terminals $\leq 2 \times 1.5\text{mm}^2$ with cable end conforming to EN 60947-1 • Screw clamp terminals $\geq 1 \times 0.22\text{mm}^2$ without cable end conforming to EN 60947-1
Type of Operator	• Trigger action and mechanical latching
Operator Profile	• Red mushroom $\varnothing 30\text{mm}$, unmarked

Reset	• Turn to release
Head Type	• Standard
Shape of Signalling Unit Head	• Round
Mounting Diameter	• 22mm
Fixing Collar Material	• Zamak
Bezel Material	• Chromium plated metal

Complementary Specifications

Dimensions	• 47mm H x 40mm W x 82mm D
Terminals Description ISO n°1	• (21-22) NC
Resistance to High Pressure Washer	• 7,000,000 Pa at 55 °C, distance : 0.1 m
Contacts Usage	• Standard contacts
Positive Opening	• Conforming to EN/IEC 60947-5-1 appendix K
Rated Insulation Voltage	• 600V (pollution degree 3) Conforming to EN 60947-1
Rated Operational Current	• 3 A at 240 V, AC-15, A600 conforming to EN/IEC 60947-5-1 • 6 A at 120 V, AC-15, A600 conforming to EN/IEC 60947-5-1 • 0.1 A at 600 V, DC-13, Q600 conforming to EN/IEC 60947-5-1 • 0.27 A at 250 V, DC-13, Q600 conforming to EN/IEC 60947-5-1 • 0.55 A at 125 V, DC-13, Q600 conforming to EN/IEC 60947-5-1 • 1.2 A at 600 V, AC-15, A600 conforming to EN/IEC 60947-5-1
Electrical reliability	• $\wedge < 10\text{exp}(-6)$ at 5 V and 1 mA in clean environment conforming to EN/IEC 60947-5-4 • $\wedge < 10\text{exp}(-8)$ at 17 V and 5 mA in clean environment conforming to EN/IEC 60947-5-4
Vibration Resistance	• 5 gn ($f = 2...500$ Hz) conforming to IEC 60068-2-6
Shock Resistance	• 30 gn (duration = 18 ms) for half sine wave acceleration conforming to IEC 60068-2-27 • 50 gn (duration = 11 ms) for half sine wave acceleration conforming to IEC 60068-2-27

Operating Travel	• 1.5mm (NC changing electrical state) • 4.3mm (total travel)
Mechanical Durability	• 300,000 cycles
Tightening Torque	• 0.8...1.2 Nm conforming to EN 60947-1
Contacts Material	• Silver alloy (Ag/Ni)
Short-Circuit Protection	• 10A cartridge fuse type gG conforming to EN/IEC 60947-5-1
Conventional Free Air Thermal Current	• 10A conforming to EN/IEC 60947-5-1
Electric Durability	• 1000000 cycles, AC-15, 2 A at 230 V, operating rate < 3600 cyc/h, load factor: 0.5 conforming to EN/IEC 60947-5-1 appendix C • 1000000 cycles, AC-15, 3 A at 120 V, operating rate < 3600 cyc/h, load factor: 0.5 conforming to EN/IEC 60947-5-1 appendix C • 1000000 cycles, AC-15, 4 A at 24 V, operating rate < 3600 cyc/h, load factor: 0.5 conforming to EN/IEC 60947-5-1 appendix C • 1000000 cycles, DC-13, 0.2 A at 110 V, operating rate < 3600 cyc/h, load factor: 0.5 conforming to EN/IEC 60947-5-1 appendix C
Operating Temperature	• -40° C to 70° C
Product Certifications	• LROS (Lloyds register of shipping) • BV • GL • DNV • CSA • UL listed